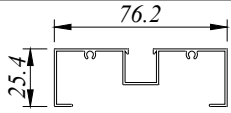
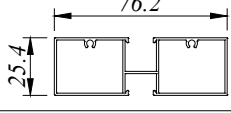
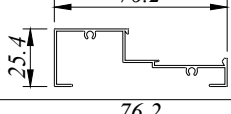
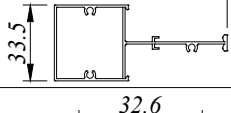
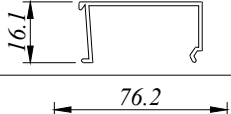
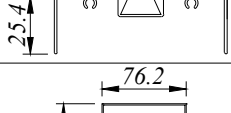
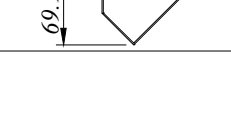
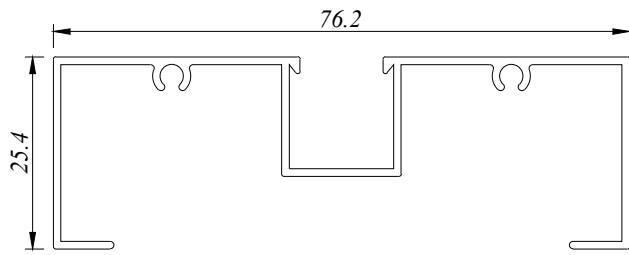


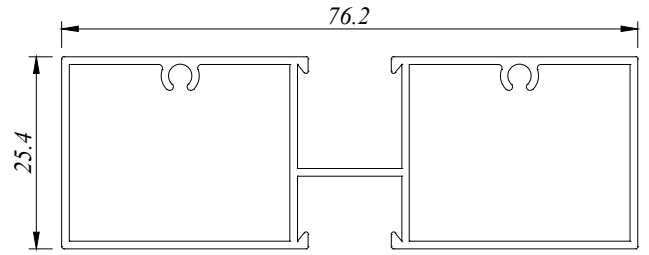
SF - Shop Front
61 SERIES

PROFILE NO.	PICTURE OF PROFILE	WEIGHT (KG/M)	THICKNESS	PACKING IN BUNDLE (PCS)
			AREA PERIMETER	
SF 6101		0.514	1.00 MM 370.808 MM	6
SF 6102		0.698	1.00 MM 268.690 MM	4
SF 6103		0.448	1.00 MM 317.381 MM	6
SF 6104		0.599	1.00 MM 268.664 MM	4
SF 6105		0.182	1.00 MM 135.344 MM	20
SF 6111		0.611	1.20 MM 319.399 MM	6
SF 6112		0.804	1.20 MM 250.998 MM	2

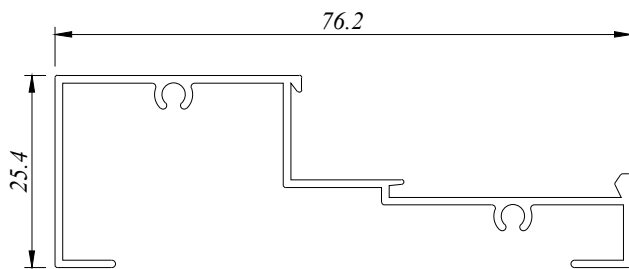
All Profiles are standard length 6.1 M for SF Series



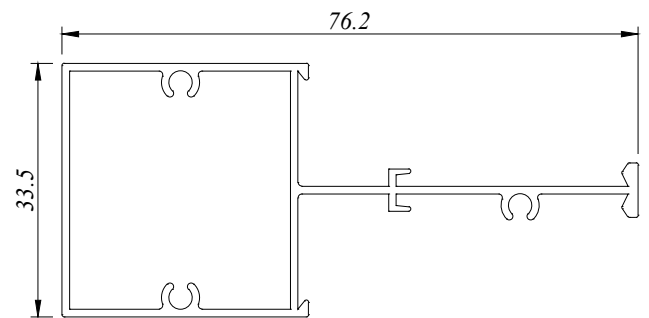
SF 6101
0.514 Kg/M
AP : 370.808 MM



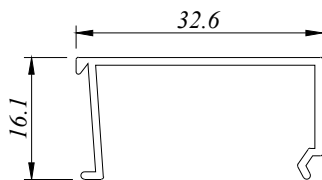
SF 6102
0.698 Kg/M
AP : 268.690 MM



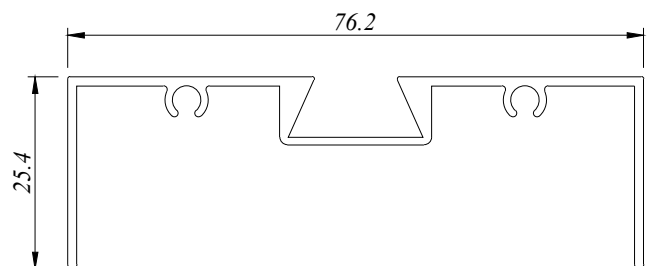
SF 6103
0.448 Kg/M
AP : 317.381 MM



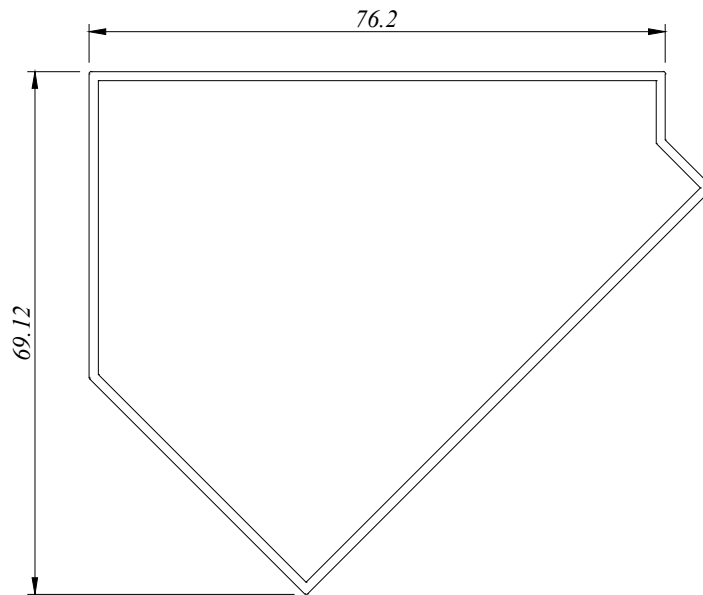
SF 6104
0.599 Kg/M
AP : 268.664 MM



SF 6105
0.182 Kg/M
AP : 135.344 MM



SF 6111
0.611 Kg/M
AP : 319.399 MM

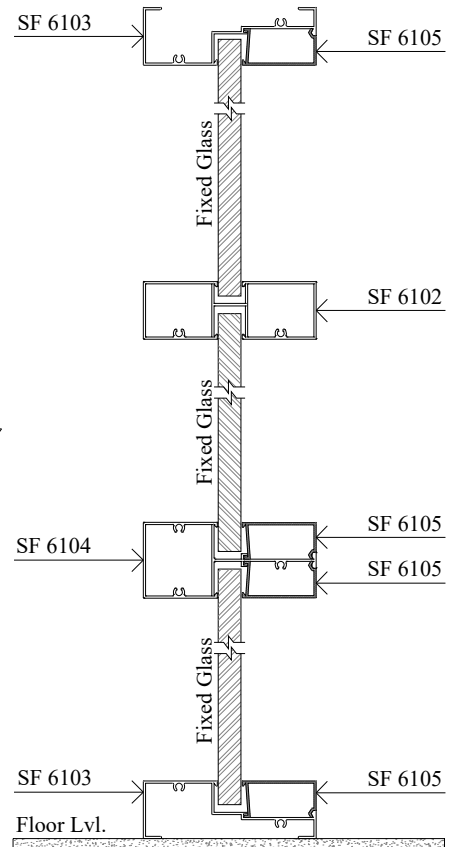
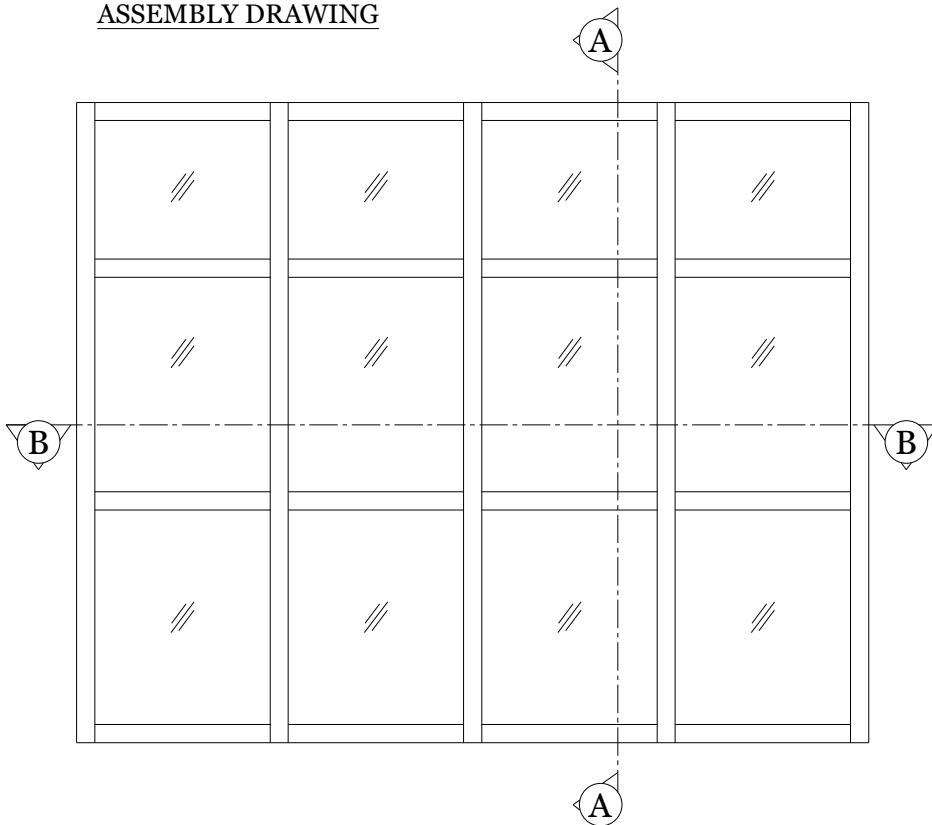


SF 6112
0.804 Kg/M
AP : 250.998 MM

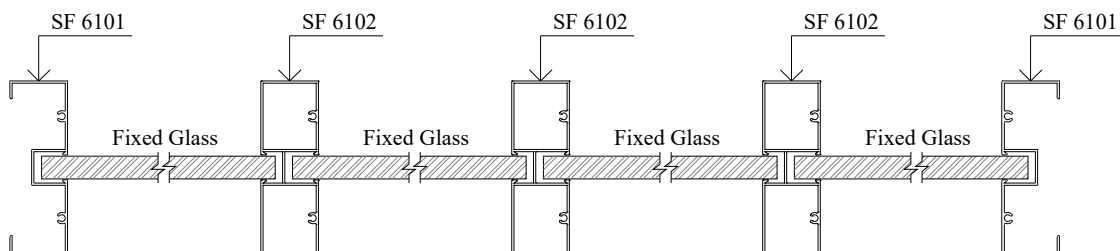
aluminium profiles component usage

Shop Front - SF 61 Series

ASSEMBLY DRAWING



SECTION VIEW A - A



BP Aluminium Extrusion Sdn. Bhd.

**No.15 & 16, 1C KKIP Selatan, Industrial Zone 2, KKIP,
88450, Jalan Sepanggar, Menggatal.**

t : 60-88-499333, 499111 f : 60-88-499222

b_p_a_e@yahoo.com