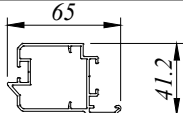
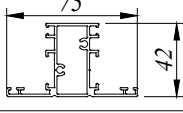
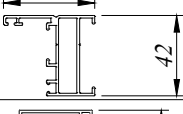
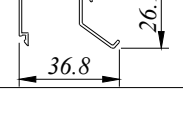
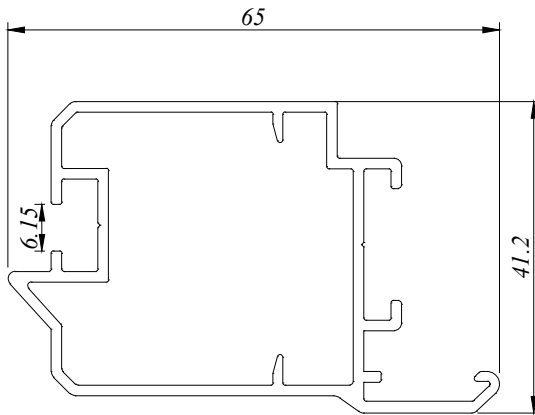


CW - Casement Window

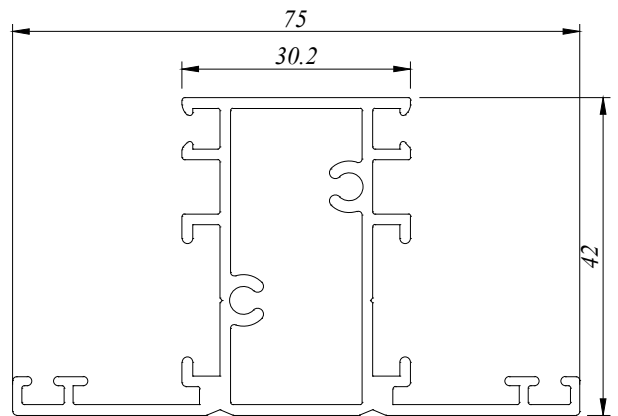
334 SERIES

PROFILE NO.	PICTURE OF PROFILE	WEIGHT (KG/M)	THICKNESS	PACKING IN BUNDLE (PCS)
			AREA PERIMETER	
CW 3341		0.867	1.40 MM 264.570 MM	4
CW 3342		1.038	1.40 MM 365.285 MM	4
CW 3343		0.732	1.40 MM 275.421 MM	8
CW 3344		0.260	1.00 MM 194.874 MM	12

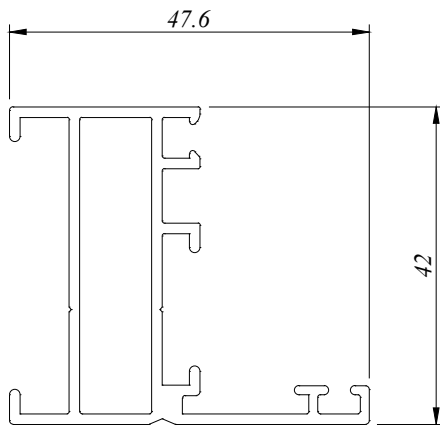
All Profiles are standard length 6.1 M for CW Series



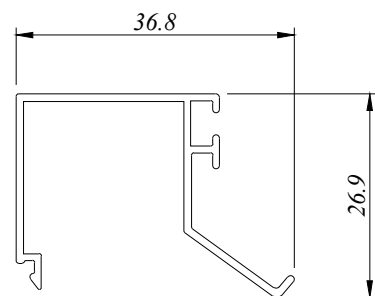
CW 3341
0.867 Kg/M
AP : 264.570 MM



CW 3342
1.038 Kg/M
AP : 365.285 MM



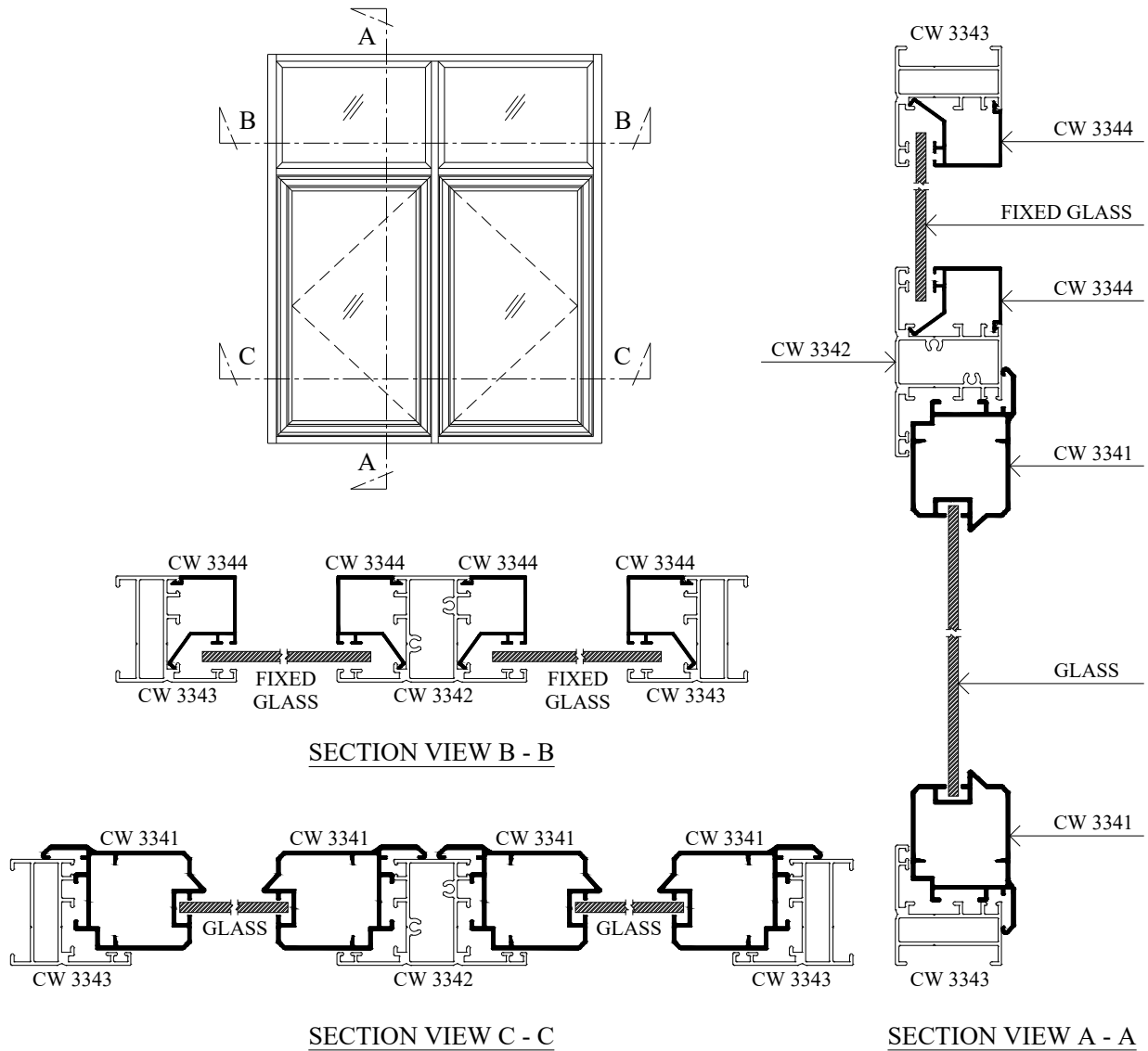
CW 3343
0.732 Kg/M
AP : 275.421 MM



CW 3344
0.260 Kg/M
AP : 194.874 MM

aluminium profiles component usage

Casement Sliding Window - CW334 Series



BP Aluminium Extrusion Sdn. Bhd.

**No.15 & 16, 1C KKIP Selatan, Industrial Zone 2, KKIP,
88450, Jalan Sepanggar, Menggatal.**

t : 60-88-499333, 499111 f : 60-88-499222

b_p_a_e@yahoo.com