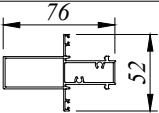
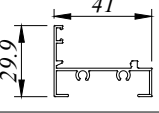
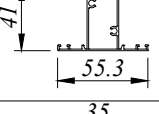
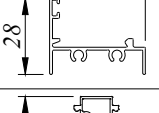
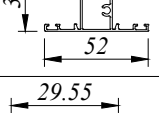

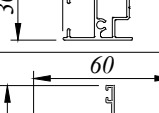
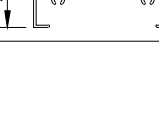
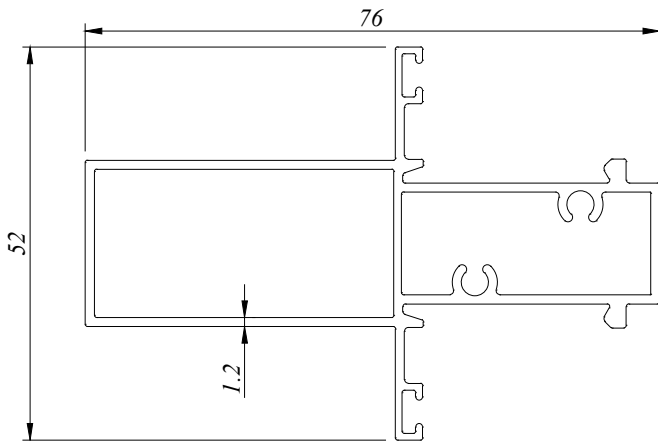


CW - Casement Window

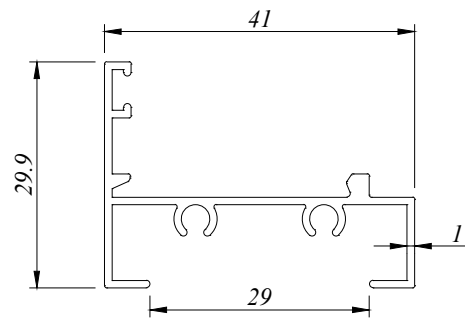
333 SERIES

PROFILE NO.	PICTURE OF PROFILE	WEIGHT (KG/M) AREA PERIMETER (MM)		PACKING IN BUNDLE (PCS)
		1.00 MM	H 1.20 MM	
CW 3330		-	0.903 300.910	2
CW 3331		0.346 235.935	0.410 234.071	8
CW 3332		0.564 379.506	-	6
CW 3333		0.305 196.541	0.338 195.550	8
CW 3334		0.530 219.311	0.595 218.800	6
CW 3335		0.170 122.497	-	20
CW 3336		0.436 201.834	0.492 200.383	8
CW 3337		0.421 284.570	-	4

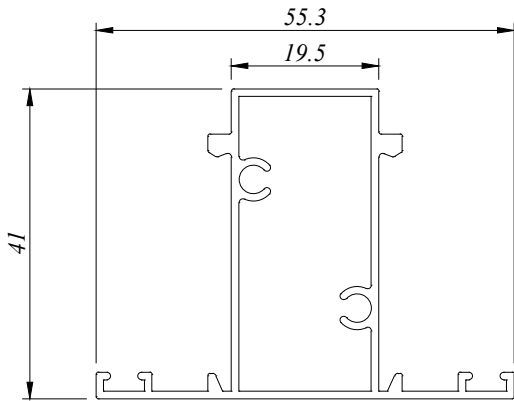
All Profiles are standard length 6.1 M for CW Series



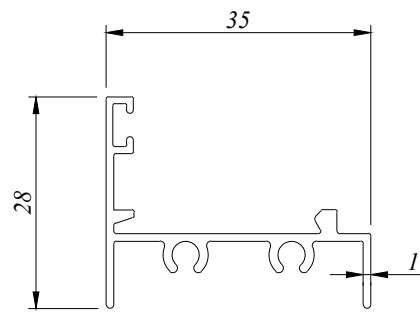
CW 3330 H
0.903 Kg/M
AP : 300.910 MM



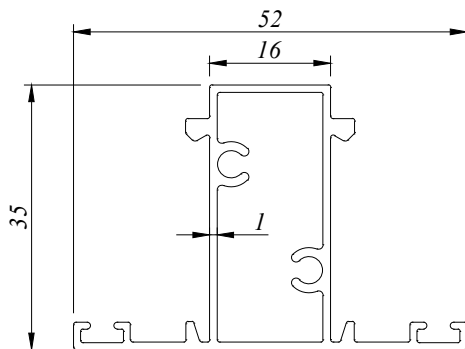
CW 3331
0.346 Kg/M
AP : 235.935 MM



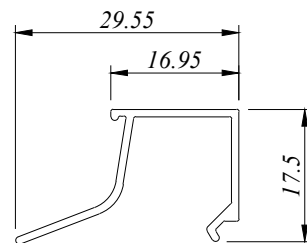
CW 3332
0.564 Kg/M
AP : 379.506 MM



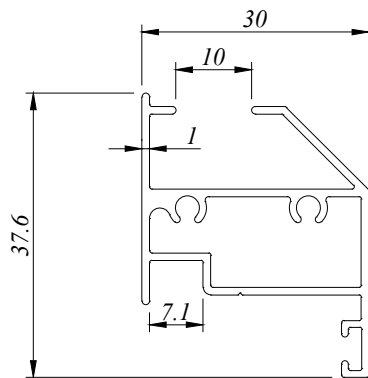
CW 3333
0.305 Kg/M
AP : 196.541 MM



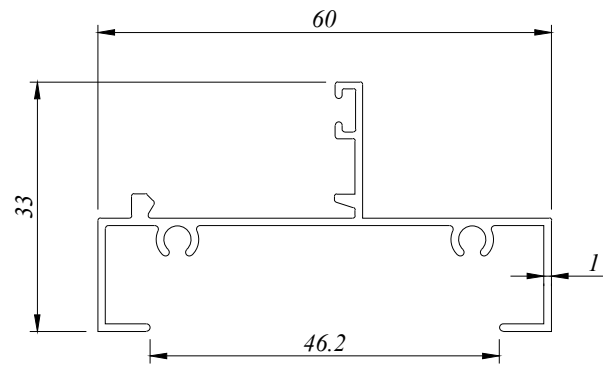
CW 3334
0.530 Kg/M
AP : 219.311 MM



CW 3335
0.170 Kg/M
AP : 122.497 MM



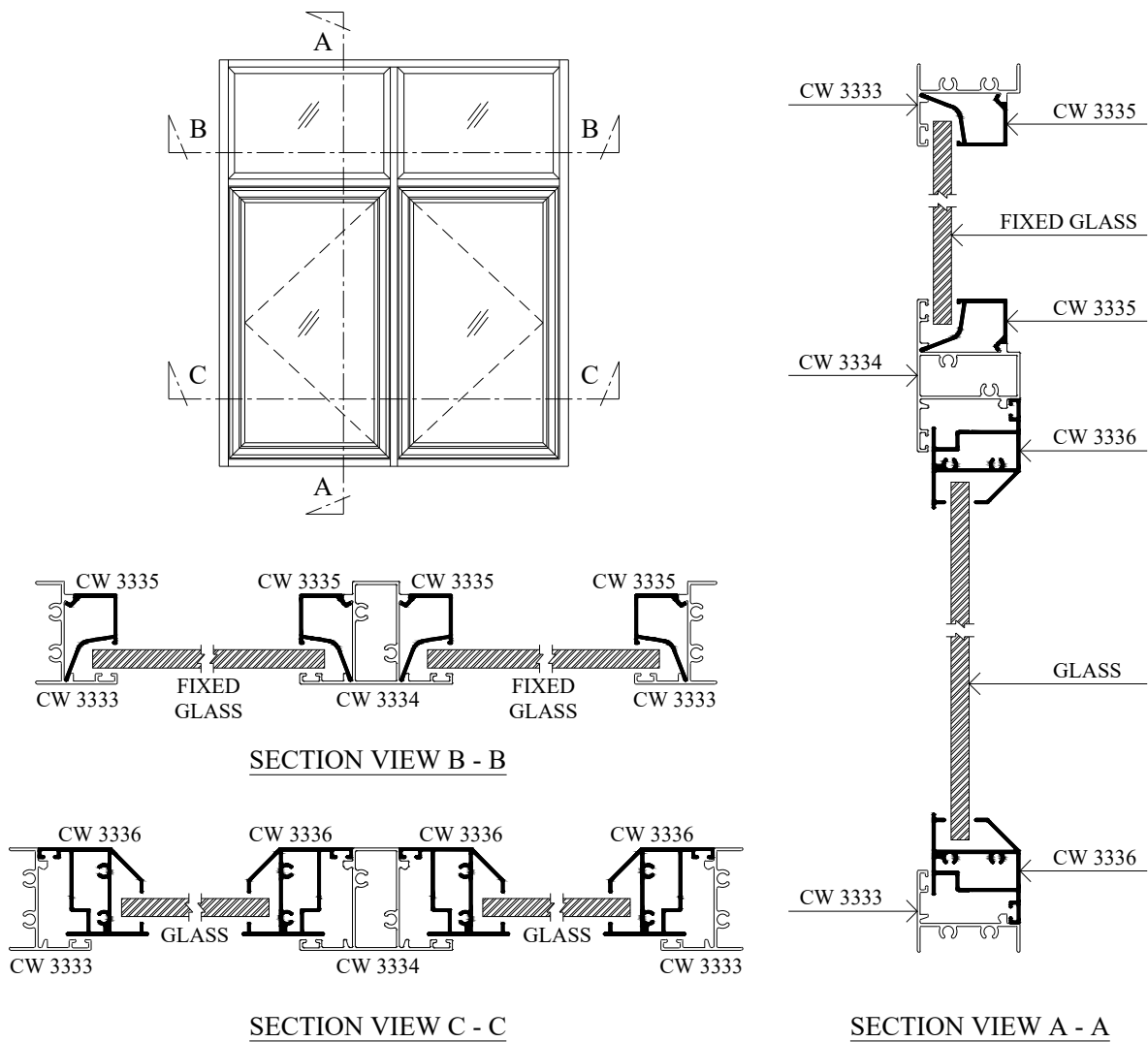
CW 3336
0.436 Kg/M
AP : 201.834 MM



CW 3337
0.421 Kg/M
AP : 284.570 MM

aluminium profiles component usage

Casement Window - CW333 Series

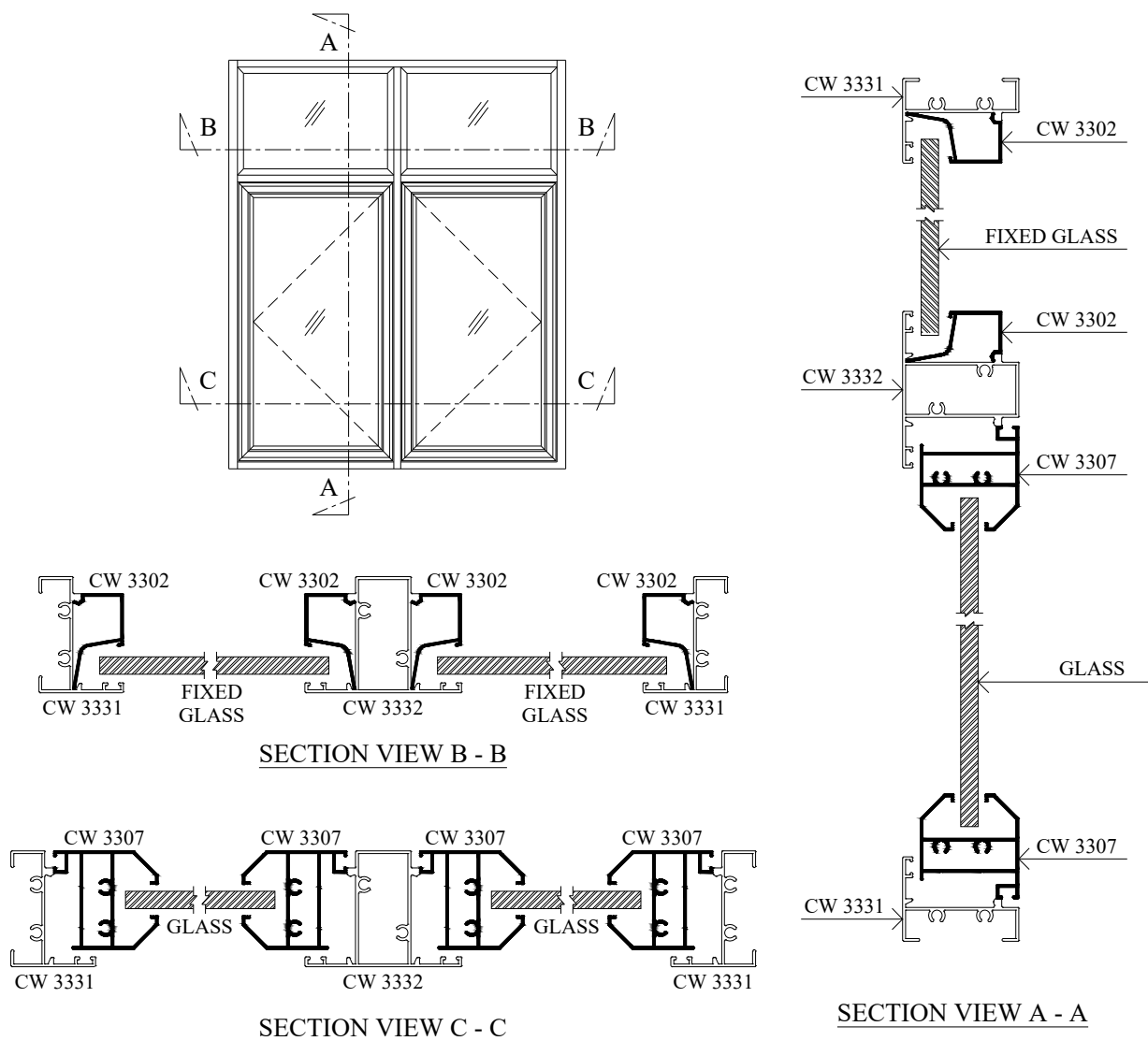


we made aluminium into shapes ...

profile information

aluminium profiles component usage

Casement Window - CW333 Series



BP Aluminium Extrusion Sdn. Bhd.

**No.15 & 16, 1C KKIP Selatan, Industrial Zone 2, KKIP,
88450, Jalan Sepanggar, Menggatal.**

t : 60-88-499333, 499111 f : 60-88-499222

b_p_a_e@yahoo.com