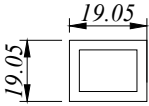
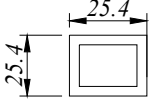
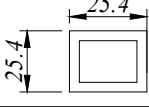
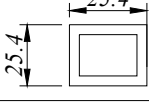
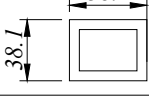

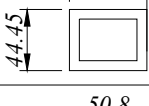
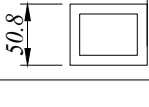
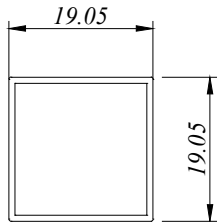


SH - Square Hollow

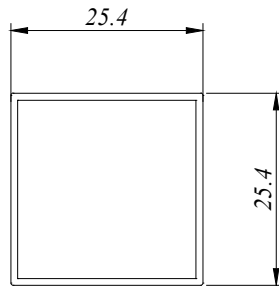
25 SERIES

PROFILE NO.	PICTURE OF PROFILE	WEIGHT (KG/M)	THICKNESS	PACKING IN BUNDLE (PCS)
			AREA PERIMETER	
SH 25060608		0.158	0.80 MM 76.200 MM	20
SH 25080809		0.248	0.90 MM 101.600 MM	12
SH 25080810		0.272	1.00 MM 101.085 MM	12
SH 25080812		0.324	1.20 MM 101.600 MM	12
SH 25121210		0.402	1.00 MM 127.000 MM	6
SH 25121220		0.806	2.00 MM 151.885 MM	4
SH 25141412		0.563	1.20 MM 177.800 MM	4
SH 25161611		0.610	1.10 MM 203.200 MM	4

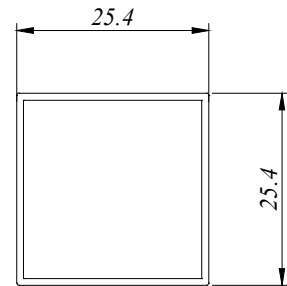
All Profiles are standard length 6.1 M for SH Series



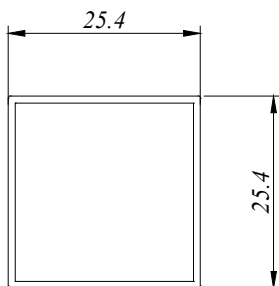
SH 25060608
0.158 Kg/M
AP : 76.200 MM



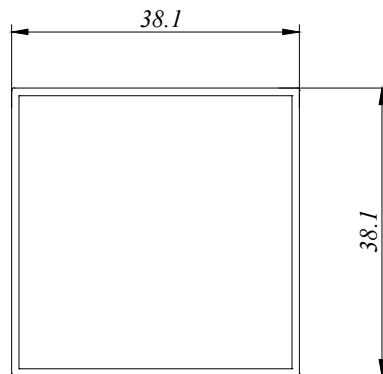
SH 25080809
0.248 Kg/M
AP : 101.600 MM



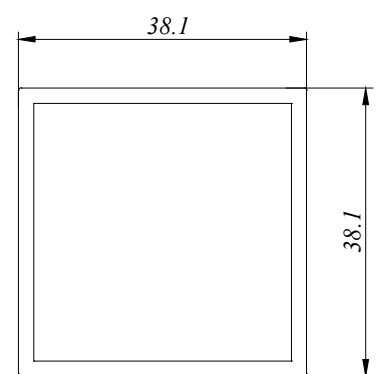
SH 25080810
0.272 Kg/M
AP : 101.085 MM



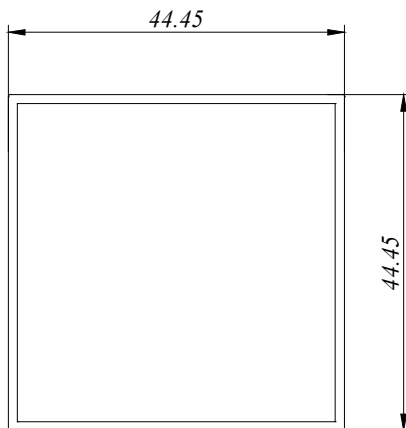
SH 25080812
0.324Kg/M
AP : 101.085 MM



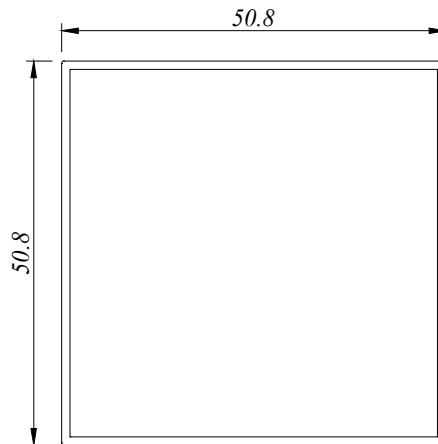
SH 25121210
0.402 Kg/M
AP : 127.000 MM



SH 25121220
0.806 Kg/M
AP : 151.885 MM



SH 25141412
0.563 Kg/M
AP : 177.800 MM



SH 25161611
0.610 Kg/M
AP : 203.200 MM



BP Aluminium Extrusion Sdn. Bhd.

No.15 & 16, 1C KKIP Selatan, Industrial Zone 2, KKIP,
88450, Jalan Sepanggar, Menggatal.

t : 60-88-499333, 499111 f : 60-88-499222

b_p_a_e@yahoo.com